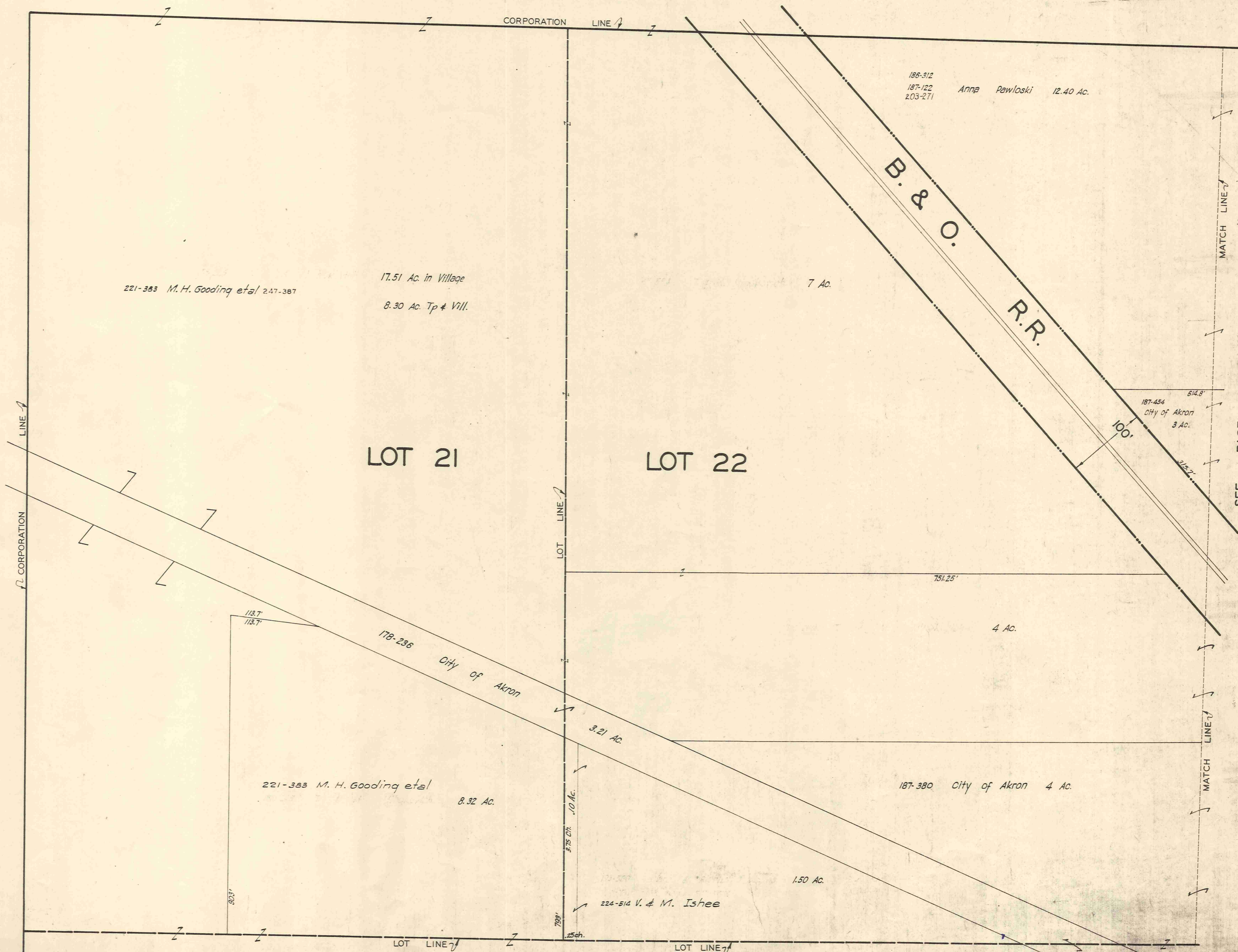


MIDDLEFIELD VILLAGE



221-383 M.H. Gooding et al 2.47-387
 17.51 Ac. in Village
 8.30 Ac. Tp & Vill.

186-312
 187-122 Anna Pawloski 12.40 Ac.
 203-271

LOT 21

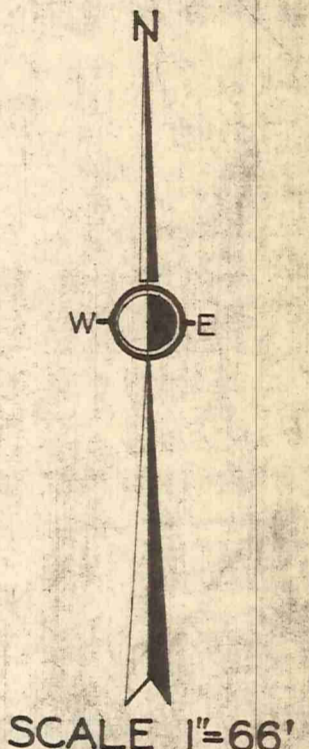
LOT 22

221-383 M.H. Gooding et al
 8.32 Ac.

187-380 City of Akron 4 Ac.

224-514 V. & M. Ishee
 1.50 Ac.

187-454 City of Akron 3 Ac.

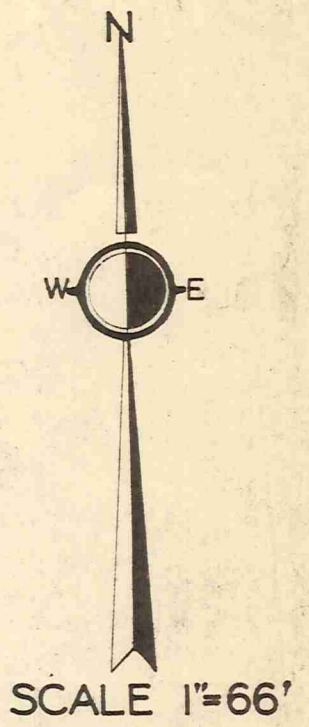
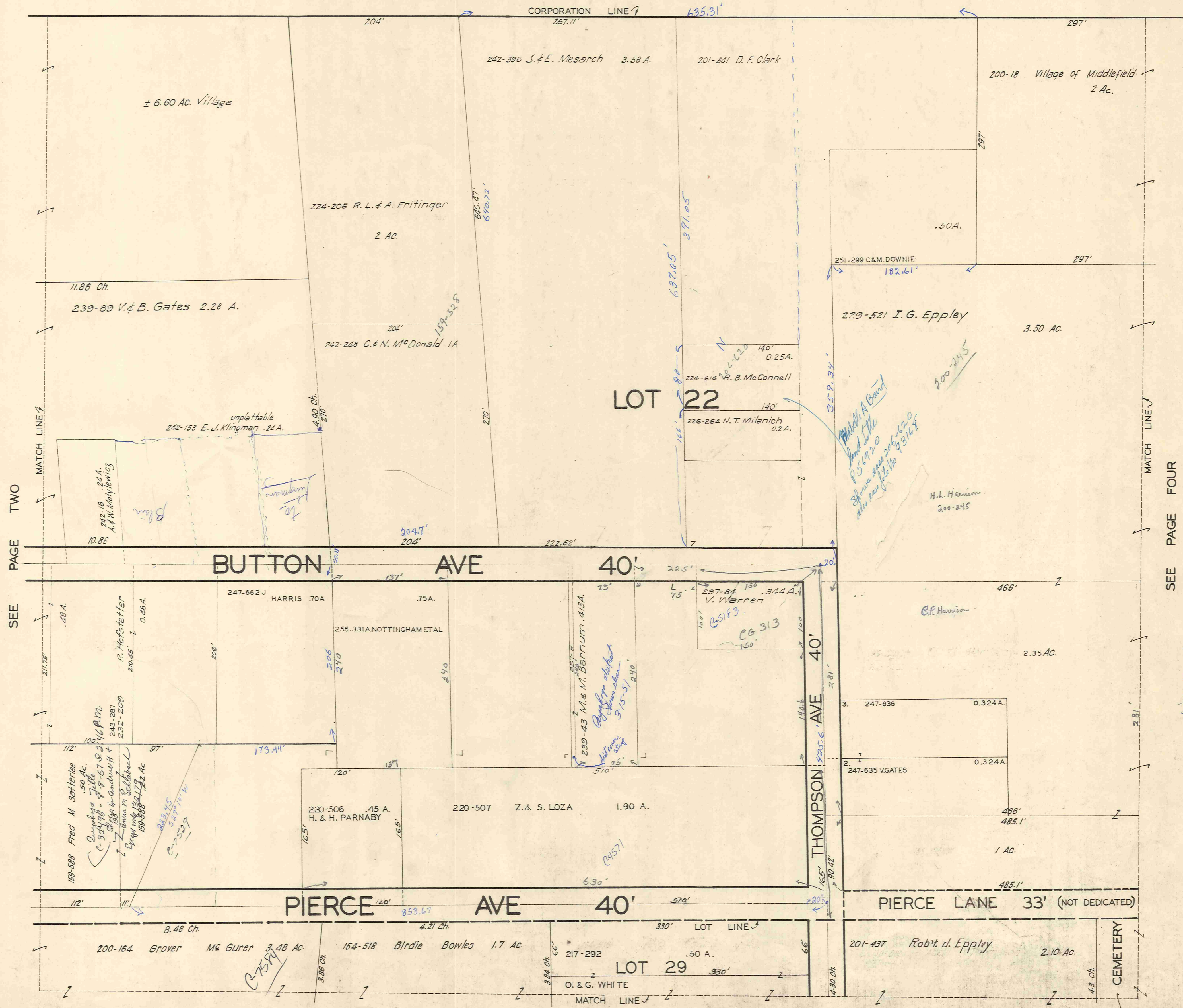


SCALE 1"=66'

JAN 1938
 MAR 1, 1954

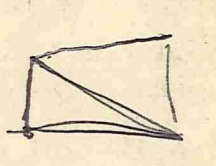
SEE PAGE TWO

SEE PAGE FIVE

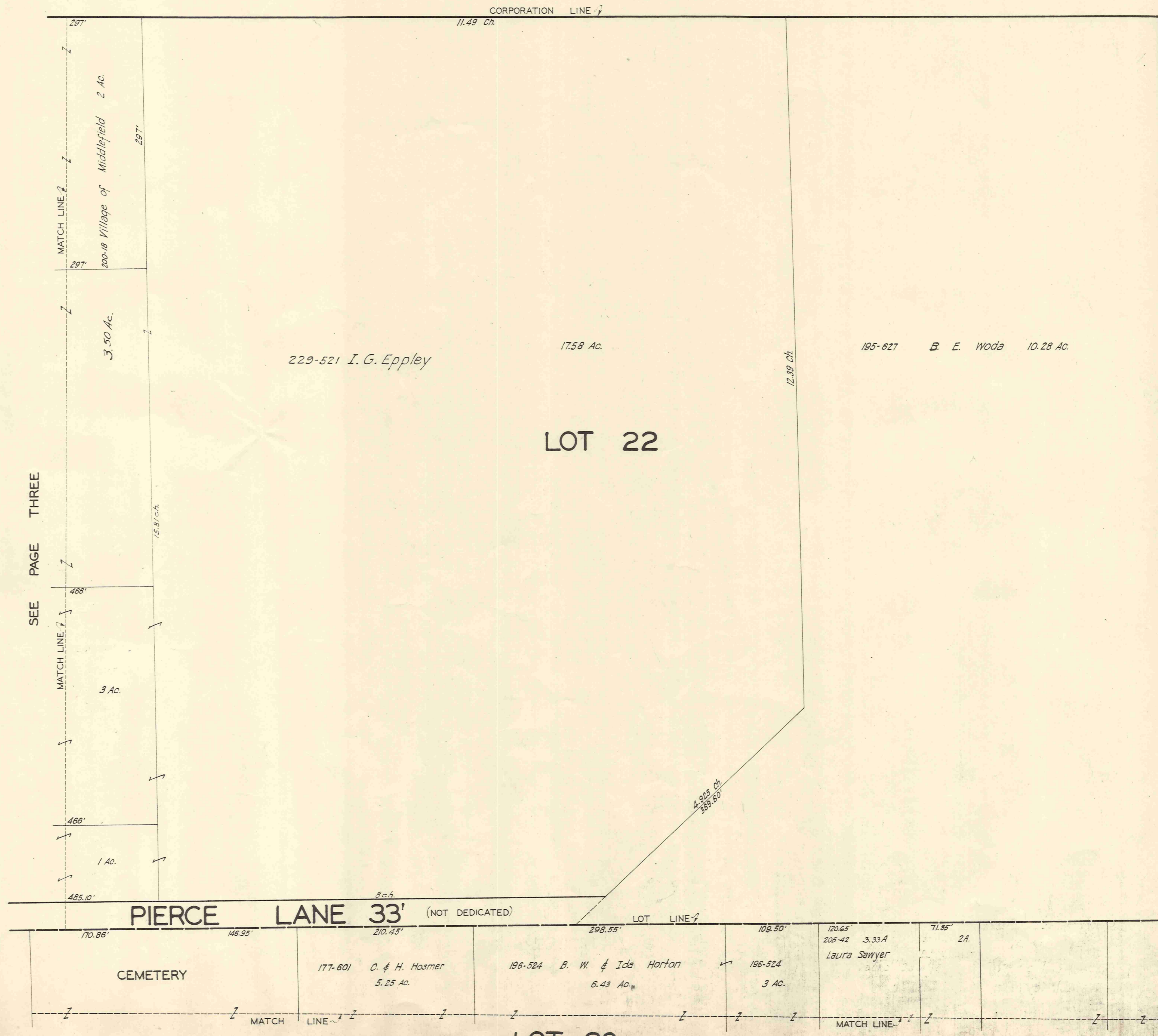


JAN. 1, 1933
MAR. 1, 1954

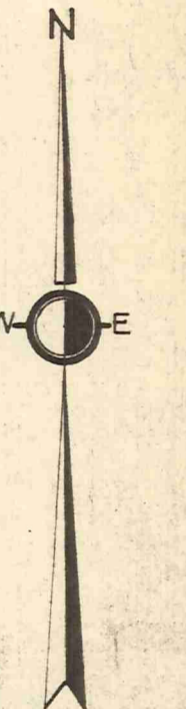
166
89
246
637.05
246.00
391.05



SEE PAGE SEVEN



SEE PAGE THREE



SCALE 1"=66'

JAN. 1958

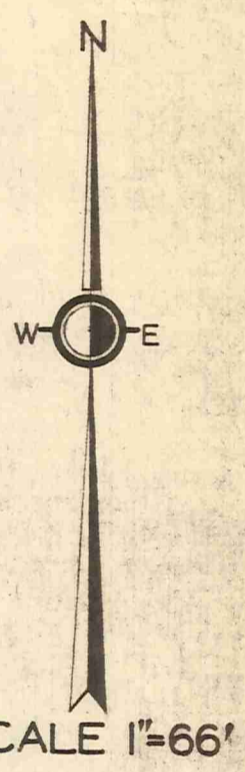
MAR. 1, 1954

SEE PAGE EIGHT

MIDDLEFIELD VILLAGE

66
132
264
170

SEE PAGE ONE



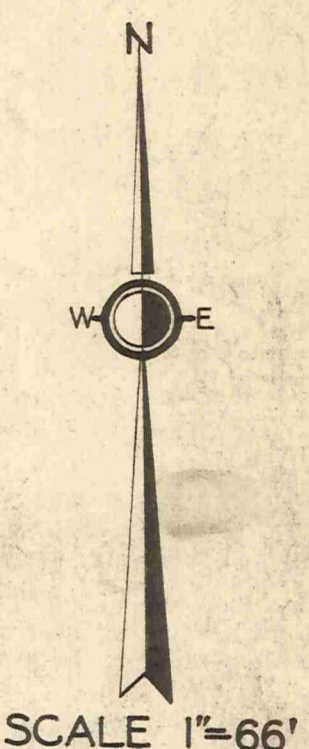
SEE PAGE SIX

MAR. 1, 1954

SEE PAGE NINE

SEE PAGE TWO

SEE PAGE SEVEN



SCALE 1"=66'

MAR. 1, 1954



SEE PAGE FIVE

SEE PAGE TEN

SO STATE ST. 66'

Handwritten notes: 160, 181, 287, 125

Handwritten notes: 98, 115, 193-308, 237, 176.00

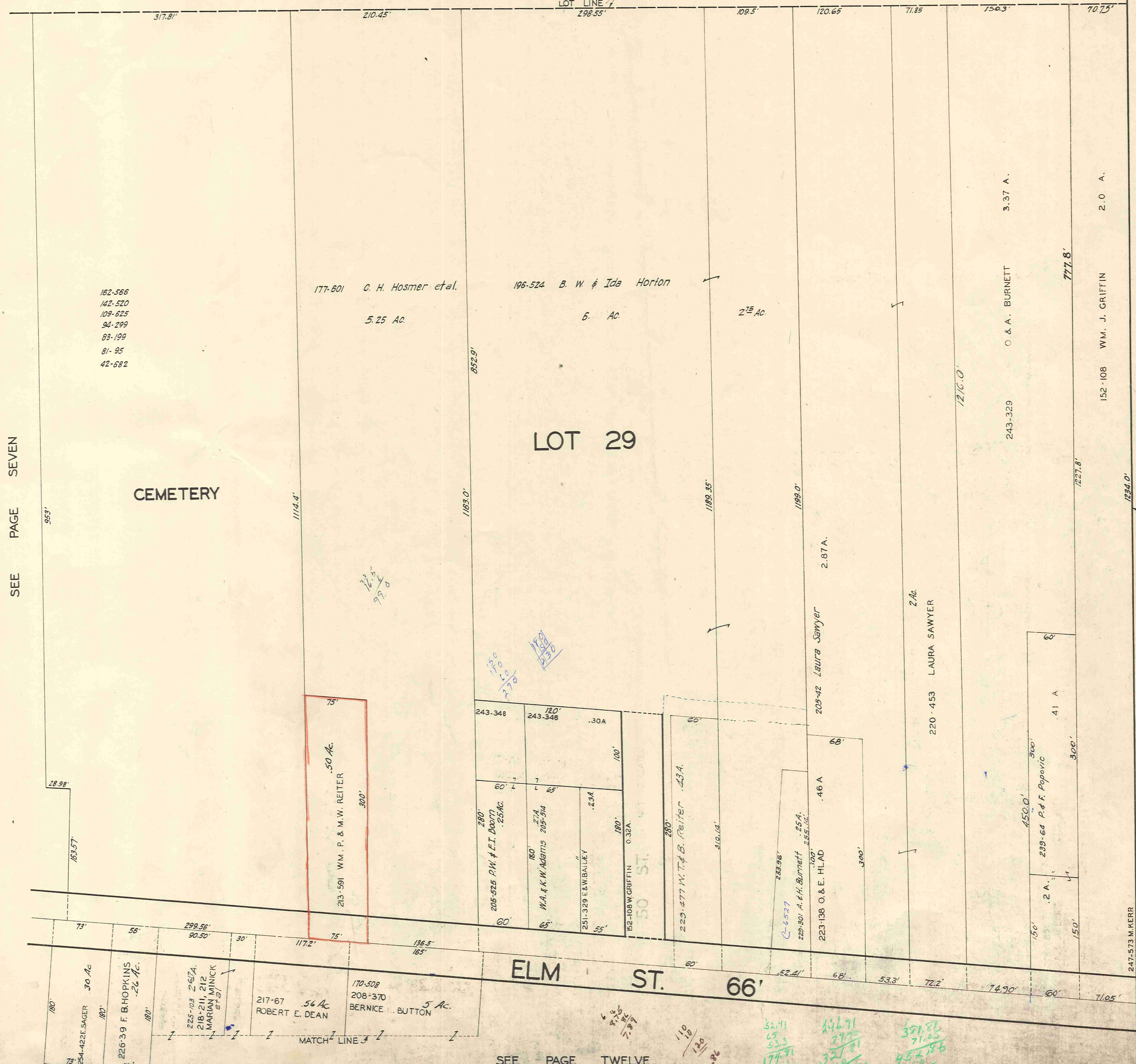
Handwritten notes: 97, 115

Handwritten notes: 150, 140, 130, 120, 110, 100, 90, 80, 70, 60, 50, 40, 30, 20, 10

Handwritten notes: 140, 130, 120, 110, 100, 90, 80, 70, 60, 50, 40, 30, 20, 10

Handwritten notes: 130, 120, 110, 100, 90, 80, 70, 60, 50, 40, 30, 20, 10

SEE PAGE FOUR

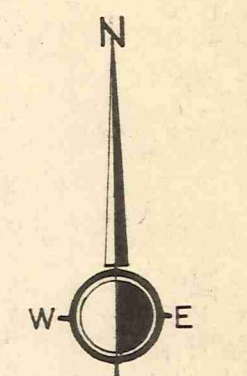


SEE PAGE SEVEN

CEMETERY

LOT 29

ELM ST. 66'

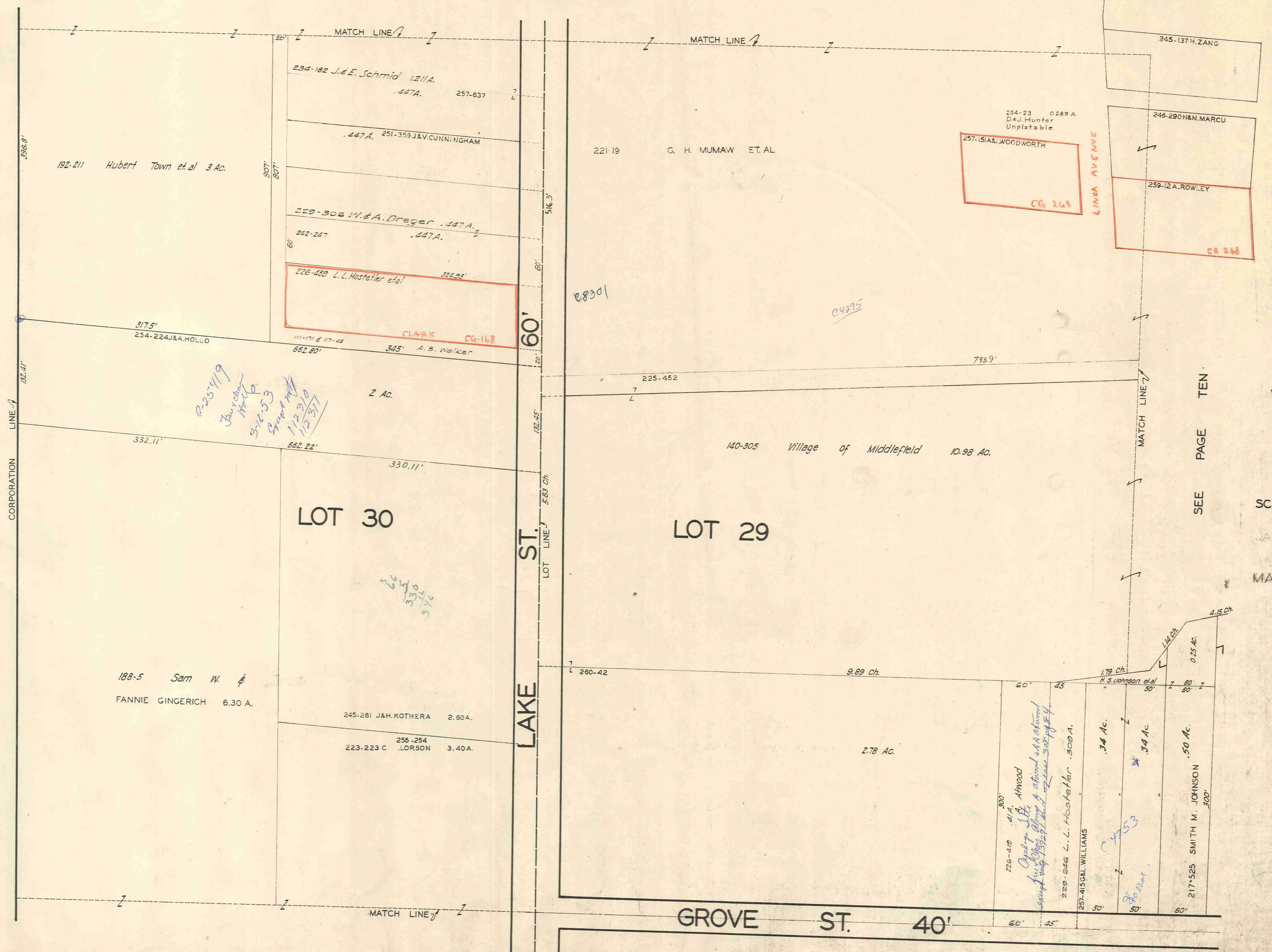


SCALE 1"=66'

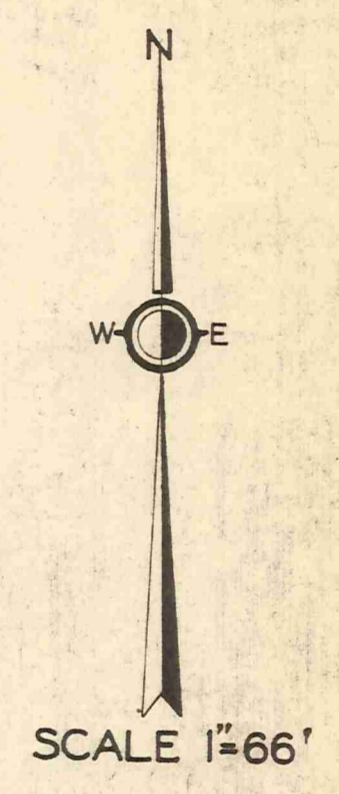
MAR. 1, 1954

SEE PAGE TWELVE

SEE PAGE FIVE



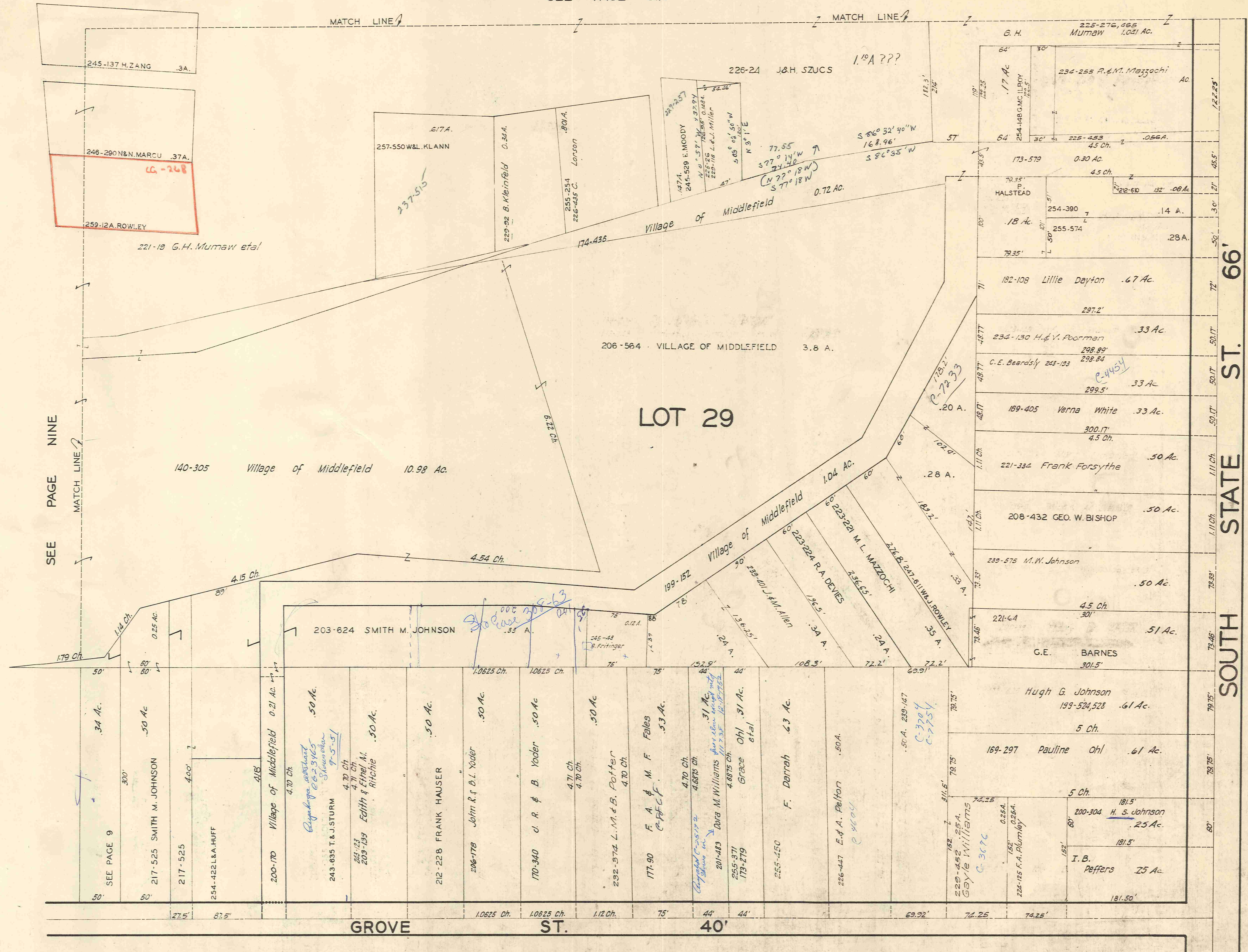
SEE PAGE TEN



JAN. 1 1938
MAR. 1, 1954

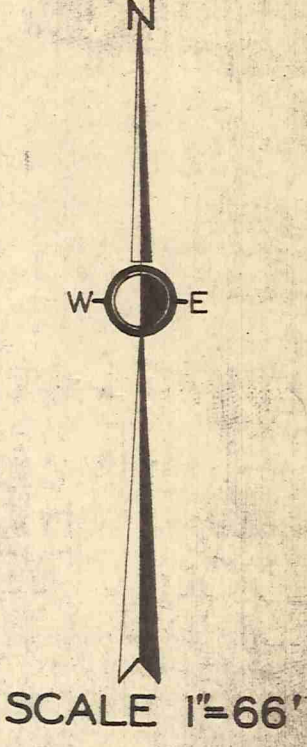
SEE PAGE THIRTEEN

SEE PAGE SIX



SEE PAGE NINE

SEE PAGE ELEVEN



JAN 1938
MAR 1, 1954

SEE PAGE FOURTEEN

4.70
1.70
1.25
1.25
1.25
31.020

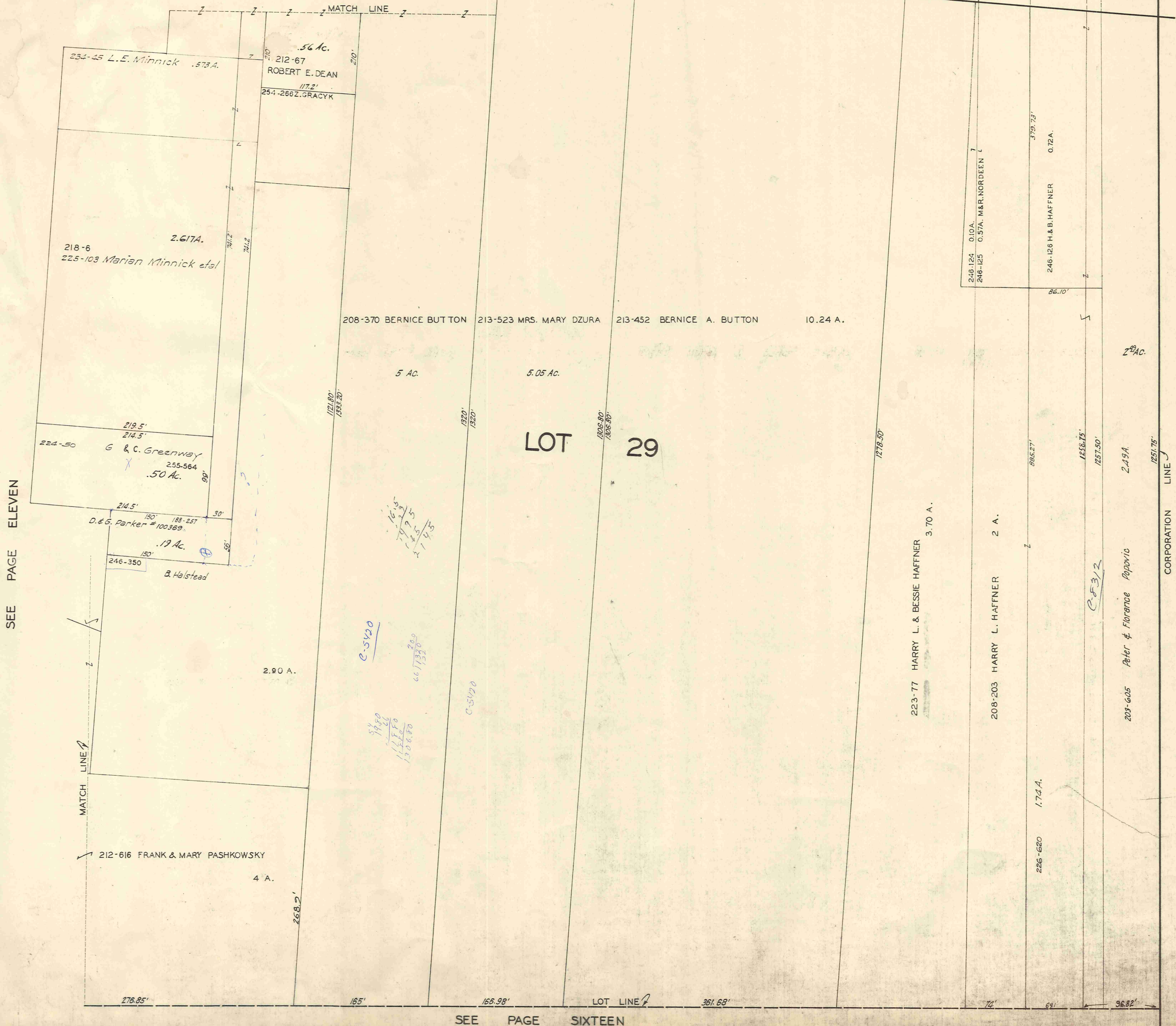
137
137

251
251
251
497

251
251
251
497

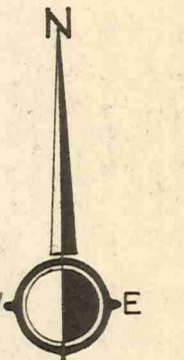
SEE PAGE EIGHT

ELM STREET 66'



SEE PAGE ELEVEN

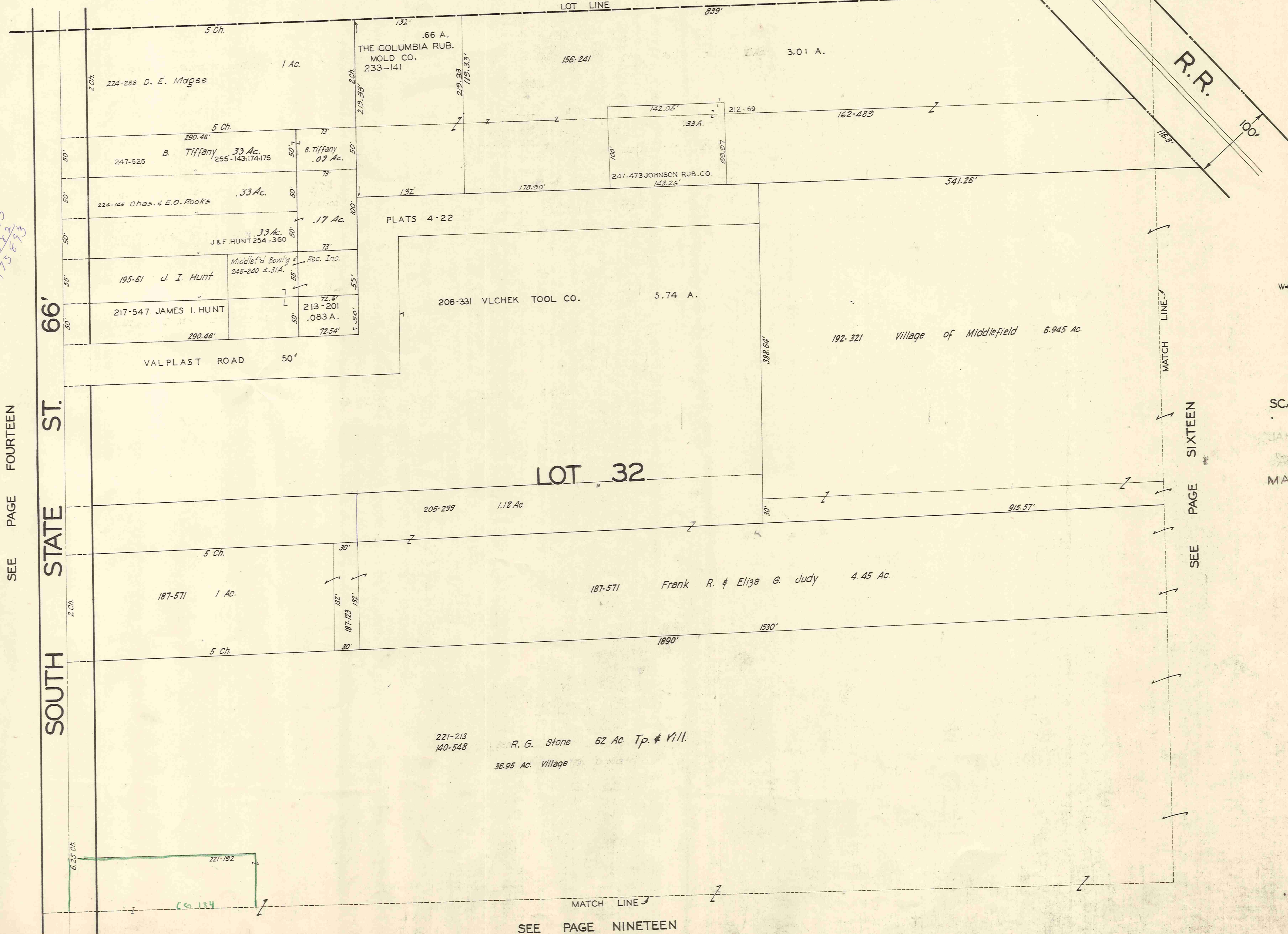
SEE PAGE SIXTEEN



SCALE 1"=66'

JAN 1 1938
MAR. 1, 1954

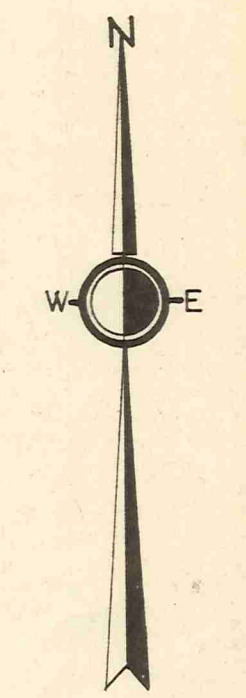
SEE PAGE ELEVEN



Handwritten notes:

3/2
3/3
3/5
125/11
207/9
152/23
175/83

66
33
365
113



SCALE 1"=66'

MAR. 1, 1954

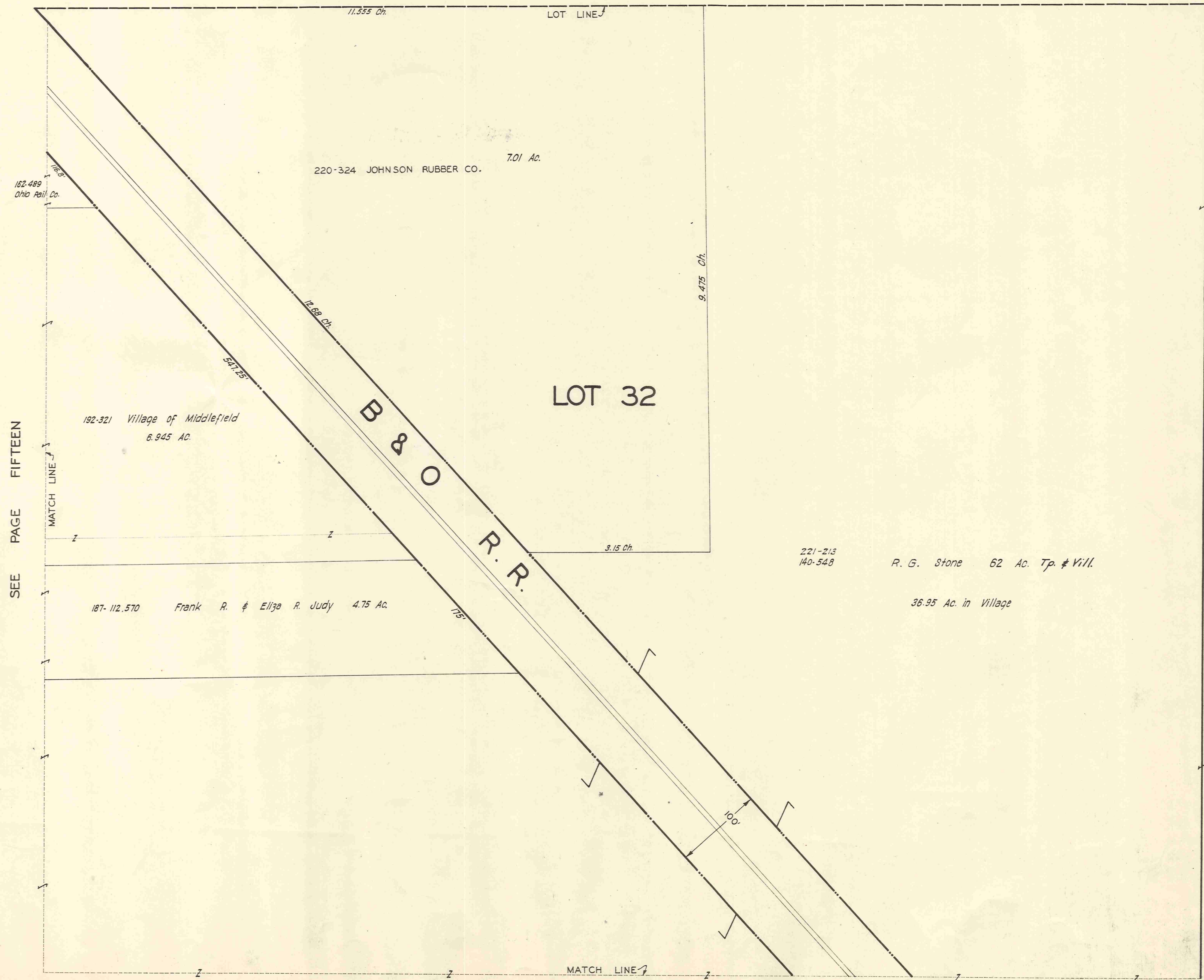
SEE PAGE FOURTEEN

SOUTH STATE ST. 66'

SEE PAGE SIXTEEN

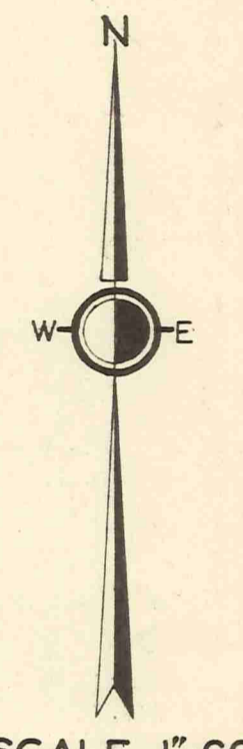
SEE PAGE NINETEEN

SEE PAGE TWELVE



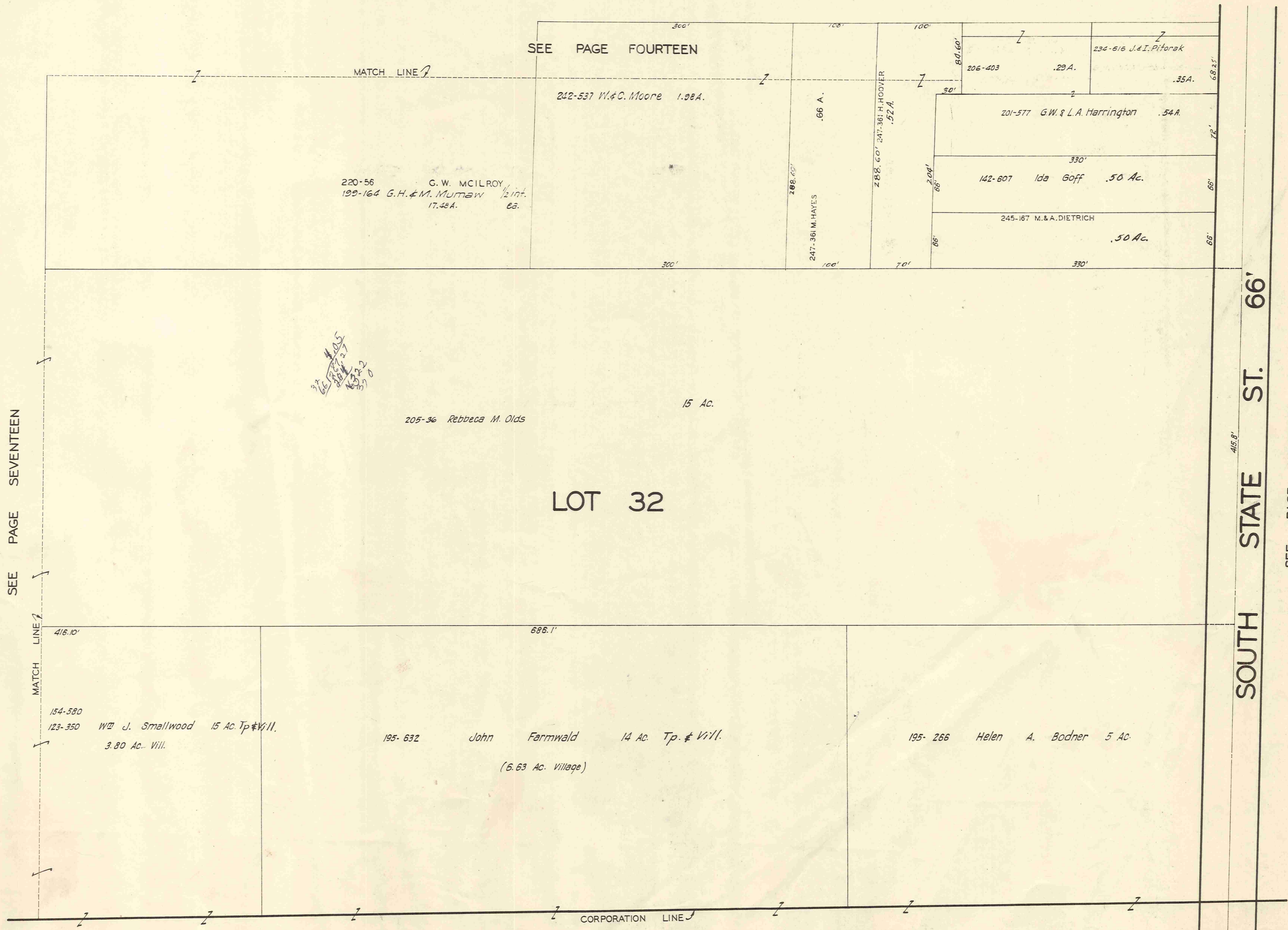
SEE PAGE FIFTEEN

SEE PAGE TWENTY



SCALE 1"=66'

MAR 15, 1954

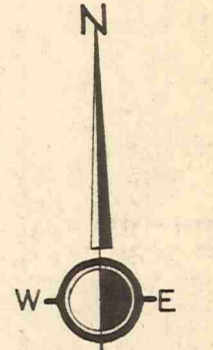


SEE PAGE SEVENTEEN

SEE PAGE FOURTEEN

SOUTH STATE ST. 66'

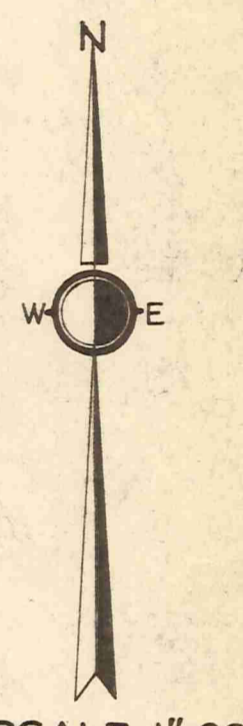
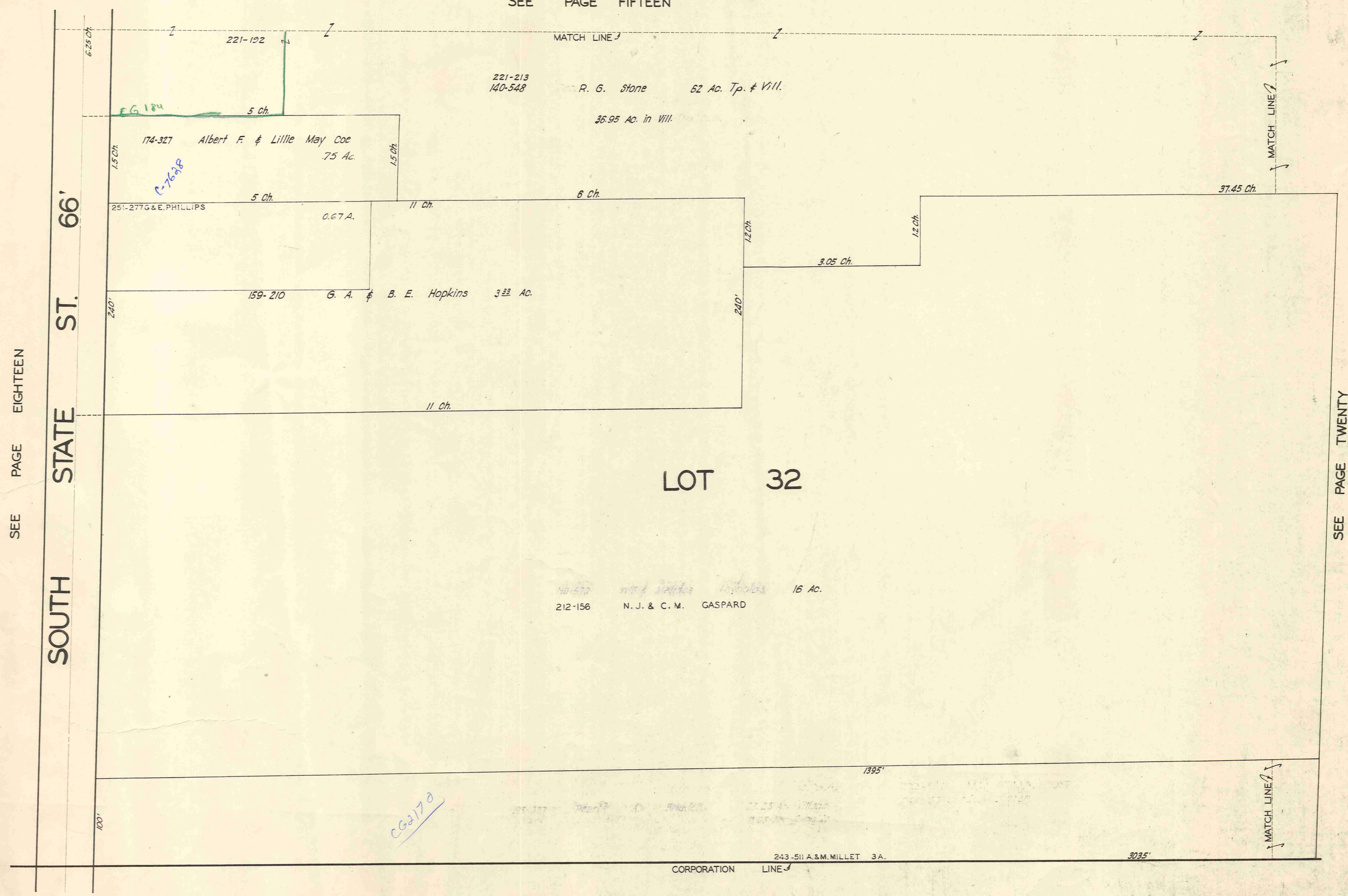
SEE PAGE NINETEEN



SCALE 1"=66'

JAN. 1, 1938
JAMES J. ...
MAR. 1, 1954

SEE PAGE FIFTEEN



SCALE 1"=66'

JAN. 1, 1936.
MAR. 1, 1954

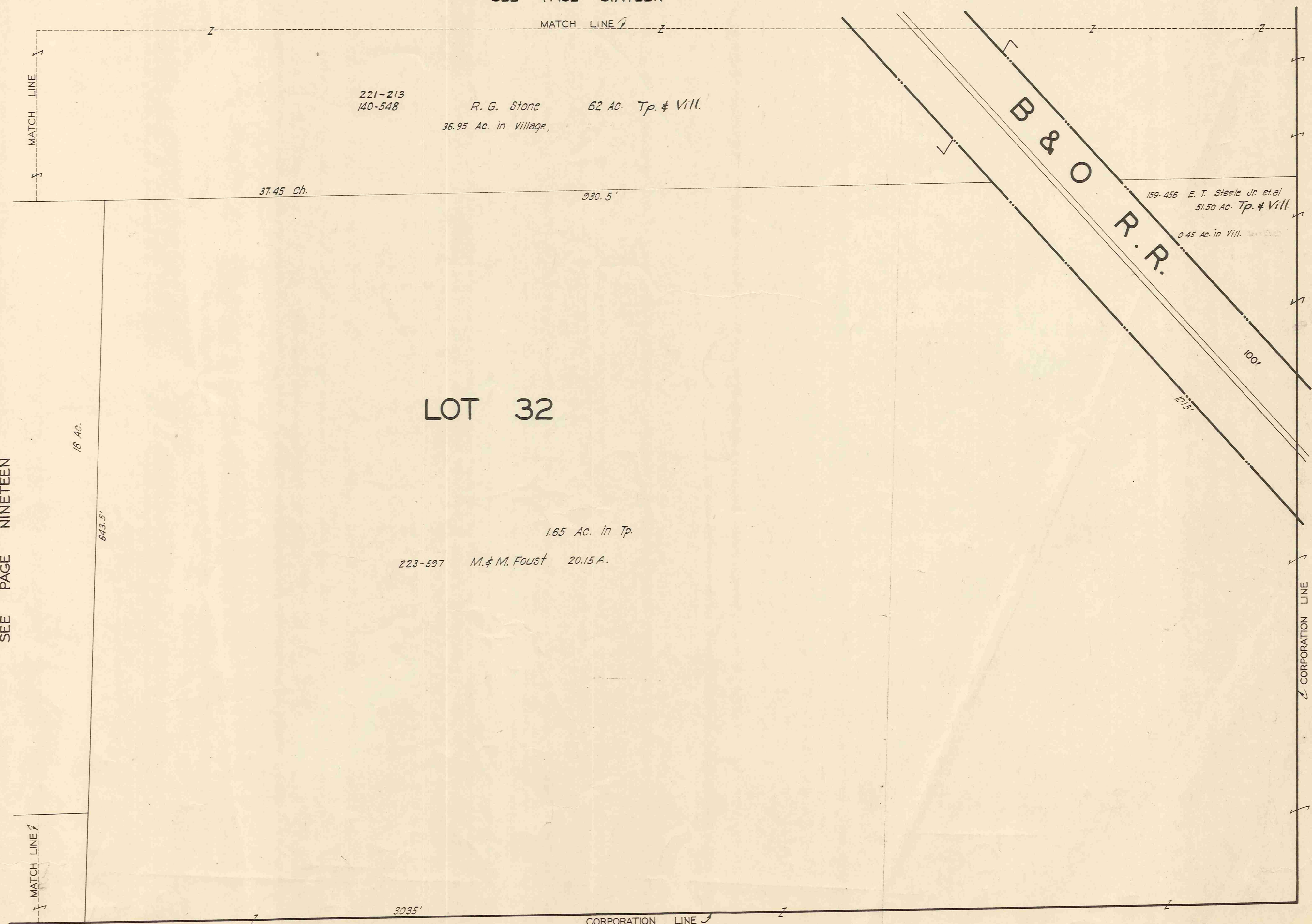
SEE PAGE EIGHTEEN

SOUTH STATE ST. 66'

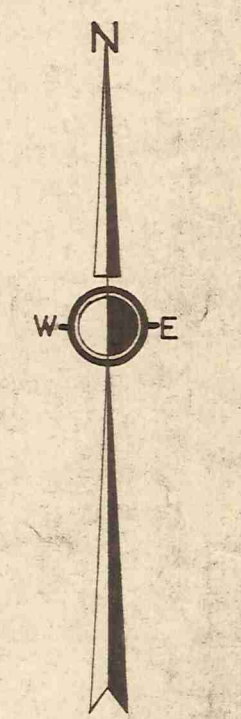
SEE PAGE TWENTY

LOT 32

SEE PAGE SIXTEEN



SEE PAGE NINETEEN



SCALE 1"=66'

JAN. 1, 1938.

MAR. 11, 1954